

Finitions

Lapalma srl si riserva il diritto di apportare modifiche tecniche e dimensionali e di introdurre miglioramenti che potrebbero cambiare l'estetica dei prodotti presentati in catalogo. I riferimenti colore stampati non sono vincolanti.

Lapalma srl reserves the right to alter the technical and dimensional specifications given in this publication and to introduce improvements that may change the aesthetics of the products shown in this catalogue. The printed colours hues are not binding.

Lapalma srl behält sich das Recht vor, jederzeit Veränderungen an den technischen Details und den Dimensionen der Produkte vorzunehmen und Verbesserungen einzuführen, die die Ästhetik der Produkte verändern können. Die Farbtöne der Abbildungen können von den tatsächlichen Farben der Produkte abweichen.

Lapalma srl se réserve le droit d'apporter des modifications techniques et de dimensions ainsi que d'introduire des améliorations qui peuvent changer l'esthétique des produits présentés. Les tonalités imprimées n'engagent pas la société.

Lapalma srl se reserva el derecho de cambiar tamaños y especificaciones técnicas de los productos listados en esta publicación, así como el de introducir mejoras que puedan cambiar la estética de los mismos. Por favor tengan en cuenta que los colores de los tejidos mostrados en fotografía no son totalmente fidedignos.



Cat B - Nattè SUNBRELLA

Application

Contract and domestic use.

Description

Composition:
100% Sunbrella® Acrylic
Width: 140 cm
Weight: app. 385 g/lin.m

Tests

Water-Repellent
Spray test ISO 4920 class 5
Colour fastness
UV indoor ISO105B02 class 8
Weather outdoor ISO105B04 1000H
Class 4-5
Dry friction ISO105X12 Class 5

Care

Dry clean or clean with foam
detergents.

Samples are purely indicative because of natural inconsistencies that occur in the raw materials. As a result there may be small differences in the product delivered.

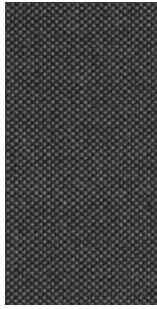




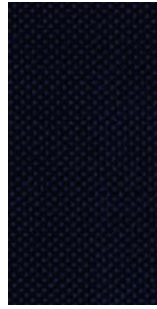
Cat B - Nattè SUNBRELLA



5073 140
Cadey Grey



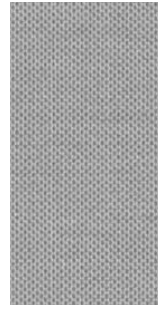
5075 140
Charcoal



5076 140
Marine



5077 140
Antique



5078 140
Stone



P048
Clay



Cat B - Iris RADA

Application

Contract and domestic use.

Description

Composition:
100% PET RECYCLED
(made with recycled plastic bottles)
Width: 140 cm
Weight: app. 800 g/lin.m

Tests

Abrasion
App. 100.000 Martindale rubs
EN ISO 12947
Pilling
dry 4-5, EN ISO 12945
wet 4, EN ISO 12945
Light fastness 7, ISO 105-B02
Flame resistance
EN 1021-1/2
BS 5852, flame
BS 5852, cigarette test
IMO FTP-8 Res.A652
UNI 9175, class 1 I-M
US Cal. Tech. Bull. 117.2013
Flame retardants
According to GB/T 24279-1:2018

Care

Dry clean or clean with foam detergents.

Samples are purely indicative because of natural inconsistencies that occur in the raw materials. As a result there may be small differences in the product delivered.





Cat C - Lapalma Smart

Application

Contract and domestic use

Description

Composition:
100% SOLUTION DYED ACRILIC
Width: 140cm
Weight Gr./mtl.: 700

Tests

Shrinkage after dry cleaning
Warp: -1 % Weft: -1 %

Shrinkage after washing
Warp: -3 % Weft: -3 %

Resistance to PILLING
after 2000 cycles
Note 4 EN ISO 12945-2

Abrasion
20000 Cicli EN ISO 12947-2

Light fastness
Note 7/8 EN ISO105B02

Color fastness to washing
Note 5 EN ISO105C06

Color fastness to dry Cleaning
Note 5 EN ISO105D01

Color fastness
to crocking Test WET
Note 4/5 EN ISO105X12

Color fastness
to crocking Test DRY
Note 5 EN ISO105X12

Care

Cleaning: Vacuuming
Mount in moist condition.
Mildew growth is not promoted
by the textile but mildew may
grow on dirt and other foreign
substances if not removed.
Keep the textile dry to avoid
mildew spores to stick.

Samples are purely indicative because of natural inconsistencies that occur in the raw materials. As a result there may be small differences in the product delivered.

