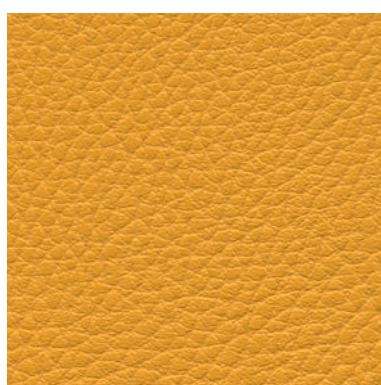


COLORIS & REVÊTEMENTS

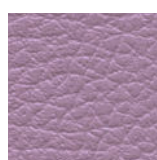


Gammes revêtements	Composition	Poids / Epaisseur	Résistance à l'Abrasion	Résistance au Feu
STEP MÉLANGE	100% Trevira CS	335 g/m ² (± 5%)	100 000 cycles	M1 - BS EN 1021/1-2
GINKGO	85% PVC - 15% Coton	830 g/m ² (± 5%) 1,3 mm	150 000 cycles	M1 - EN 1021/1-2

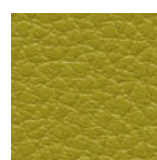
GINKGO



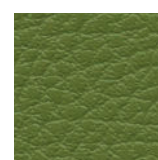
Mirabelle
013 32 021



Lilas
013 32 008



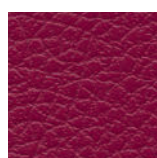
Granny
013 32 052



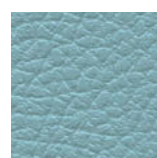
Amande
013 32 020



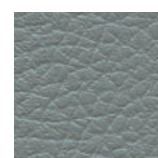
Seigle
013 32 027



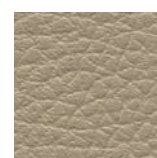
Bégonia
013 32 046



Aigue Marine
013 32 012



Pierre
013 32 050



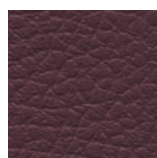
Mastic
013 32 013



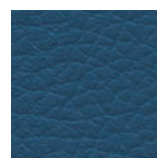
Citrouille
013 32 015



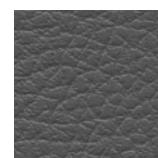
Groseille
013 32 026



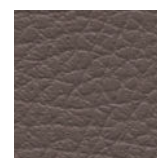
Quetsche
013 32 007



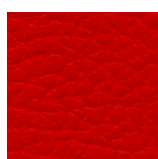
Pétrole
013 32 060



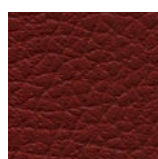
Souris
013 32 004



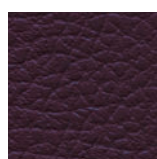
Taupe
013 32 043



Tomate
013 32 044



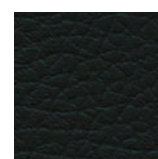
Morgon
013 32 016



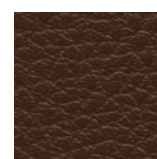
Myrtille
013 32 045



Nuit
013 32 011

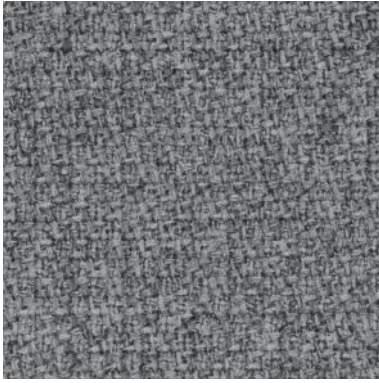


Anthracite
013 32 002



Café
013 32 049

STEP MELANGE



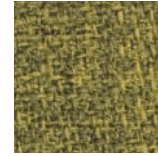
M 60004



M 67004



M 68118



M 62073



M 62057



M 66018



M 67072



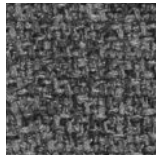
M 68119



M 63082



M 61104



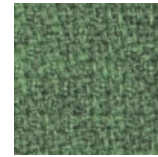
M 60011



M 66152



M 67007



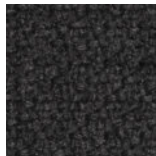
M 68159



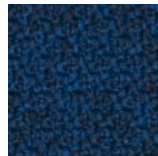
M 64013



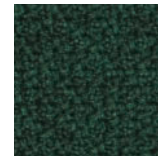
M 61103



M 60021



M 66149



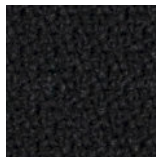
M 68161



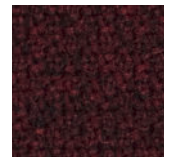
M 65023



M 61102

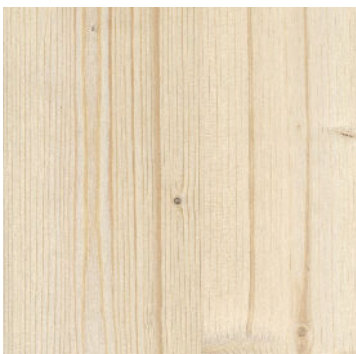


U 60999



M 64159

Structure bois



Epicéa